

# EVFC( $\phi 20$ )

High Voltage automotive fuses with excellent durability properties

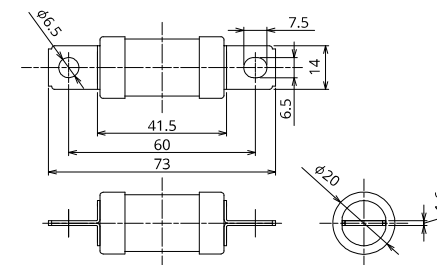


## General Specification

Rated Voltage	DC500V
Breaking Capacity	16000A
Recommended Operating Temp.	-40°C~125°C*2
Standard	—
Country of Origin	Japan
Plating	Tin plating
Standard Packaging	140
Insertion Force	—
Pull-out Load	—
Recommended Torque	(9.0±1.0)N·m

\*2 Please contact us for the details of operating temperature.

## Dimensions



## Product Lineup

Ampere Rating(A)	Part Number	Bolt Size	Diameter	Resistance Value	Voltage Drop
60	under development	M6	$\phi 20$	under development	under development
70					
80					
100					
125					

\*This product is under development, so please contact us for the details.

## Time-Current Characteristic

% of Ampere Rating(A)	Operating Time	
	Min	Max
110%	4hrs.	—
135%	150sec.	3600sec.
150%	20sec.	1000sec.
200%	8sec.	150sec.
300%	1sec.	15sec.
500%	0.05sec.	1sec.

\*The fuse characteristic may change depending on the conditions of use.

## Time-Current Characteristic Chart

